



## DESCRIPTION

THIS DELIGHTFUL ABODE HAS EXTENSIVE FEATURES FOR THE ADVANTAGEOUS ANGLER-- THAT IS RIGHT, A FISHING DOCK! AND ON THOSE COLD WINTER DAYS, IT IS EASY TO ENJOY THE OUTDOORS UNDER THE COVERED PORCH NEXT TO THE DOUBLE-SIDED FIREPLACE. THIS SINGLE-FAMILY HOME DESIGN AIMS TO PLEASE.

## AREA CALCULATIONS

FIRST FLOOR CONDITIONED

1478 SQ FT

SECOND FLOOR CONDITIONED

669 SQ FT

TOTAL CONDITIONED

2147 SQ FT

FIRST FLOOR UNDER ROOF

2387 SQ FT

SECOND FLOOR UNDER ROOF

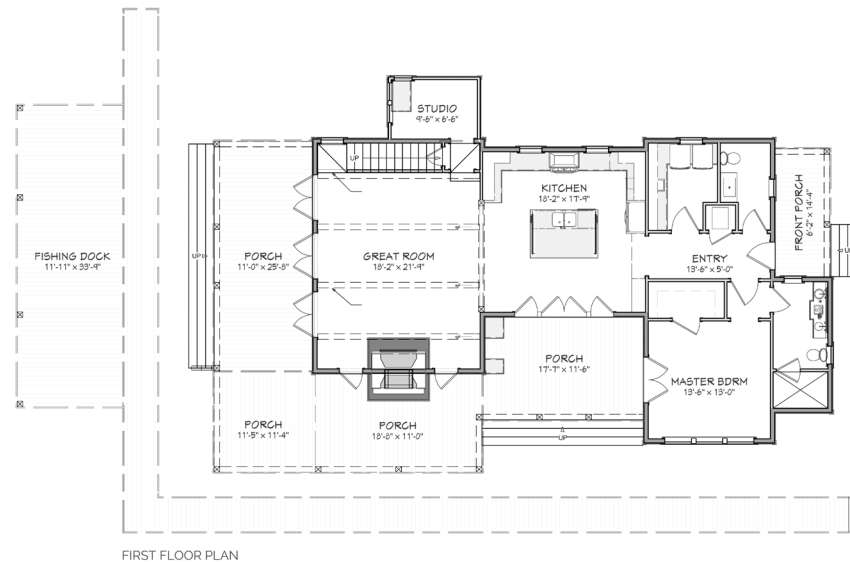
669 SQ FT

TOTAL UNDER ROOF

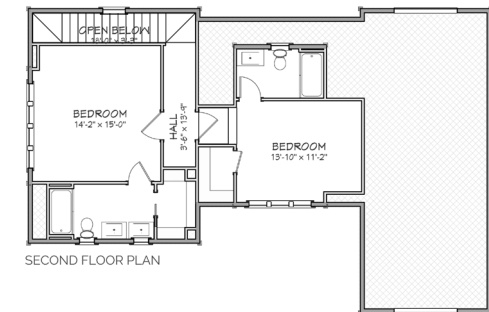
3056 SQ FT

## HIGHLIGHTS

- DOUBLE-SIDED FIREPLACE
- LARGE KITCHEN ▪ 3.5 BATHROOM
- 3 BEDROOM ▪ LARGE FISHING DOCK
- COVERED PORCH ▪ SINGLE-FAMILY



FIRST FLOOR PLAN



SECOND FLOOR PLAN

# LAMBERT COTTAGE

THIS IS PROPERTY OF LAKE + LAND STUDIO, LLC. THIS IS NOT A CONSTRUCTION DOCUMENT AND MAY NOT BE USED OR REPRODUCED WITHOUT THE PERMISSION OF LAKE + LAND STUDIO, LLC.

**LAKE + LAND STUDIO, LLC**

15 KEYSTONE DRIVE, SUITE A  
HATTIESBURG, MS 39402  
601.336.8114

[WWW.LAKEANDLANDSTUDIO.COM](http://WWW.LAKEANDLANDSTUDIO.COM)